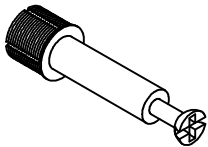

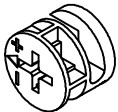
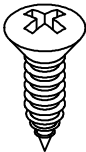
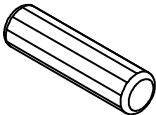
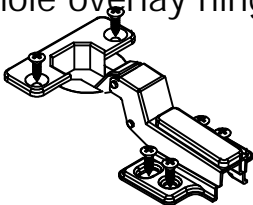
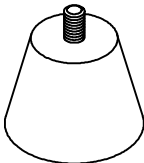
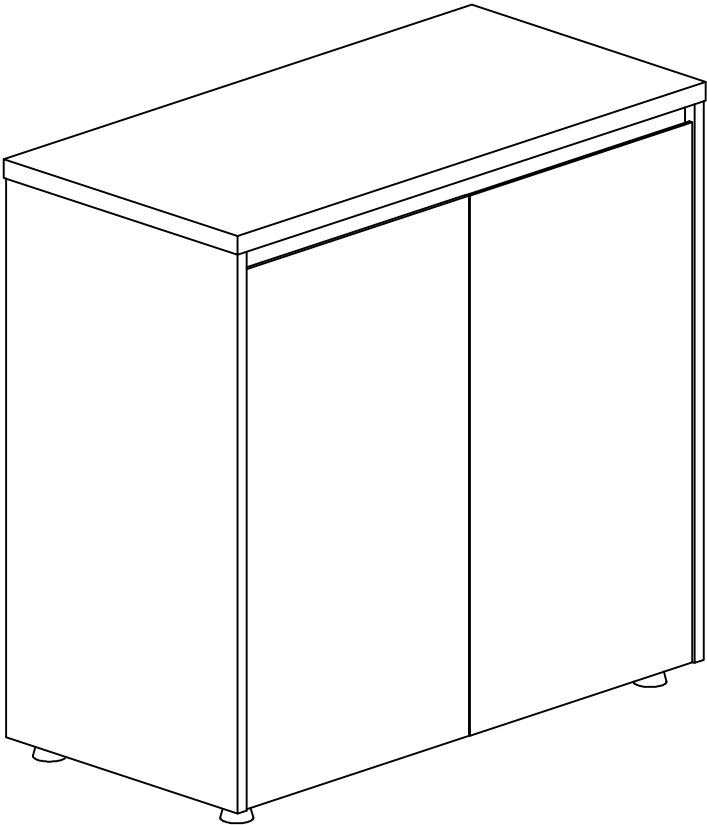
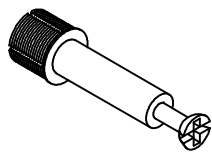


246-000007

<div>Minifix Screw</div> <div></div> <div>X16</div> <div>A</div>	<div>Shelves fix screw</div> <div></div> <div>X4</div> <div>E</div>
<div>Minifix</div> <div></div> <div>X16</div> <div>B</div>	<div>Screw</div> <div></div> <div>X24</div> <div>F</div>
<div>Wood Minifix</div> <div></div> <div>X8</div> <div>C</div>	<div>Whole overlay hinge</div> <div></div> <div>X4</div> <div>G</div>
<div>Base</div> <div></div> <div>X4</div> <div>D</div>	

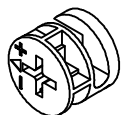


(800X400X800)



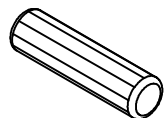
X2

A



X2

B

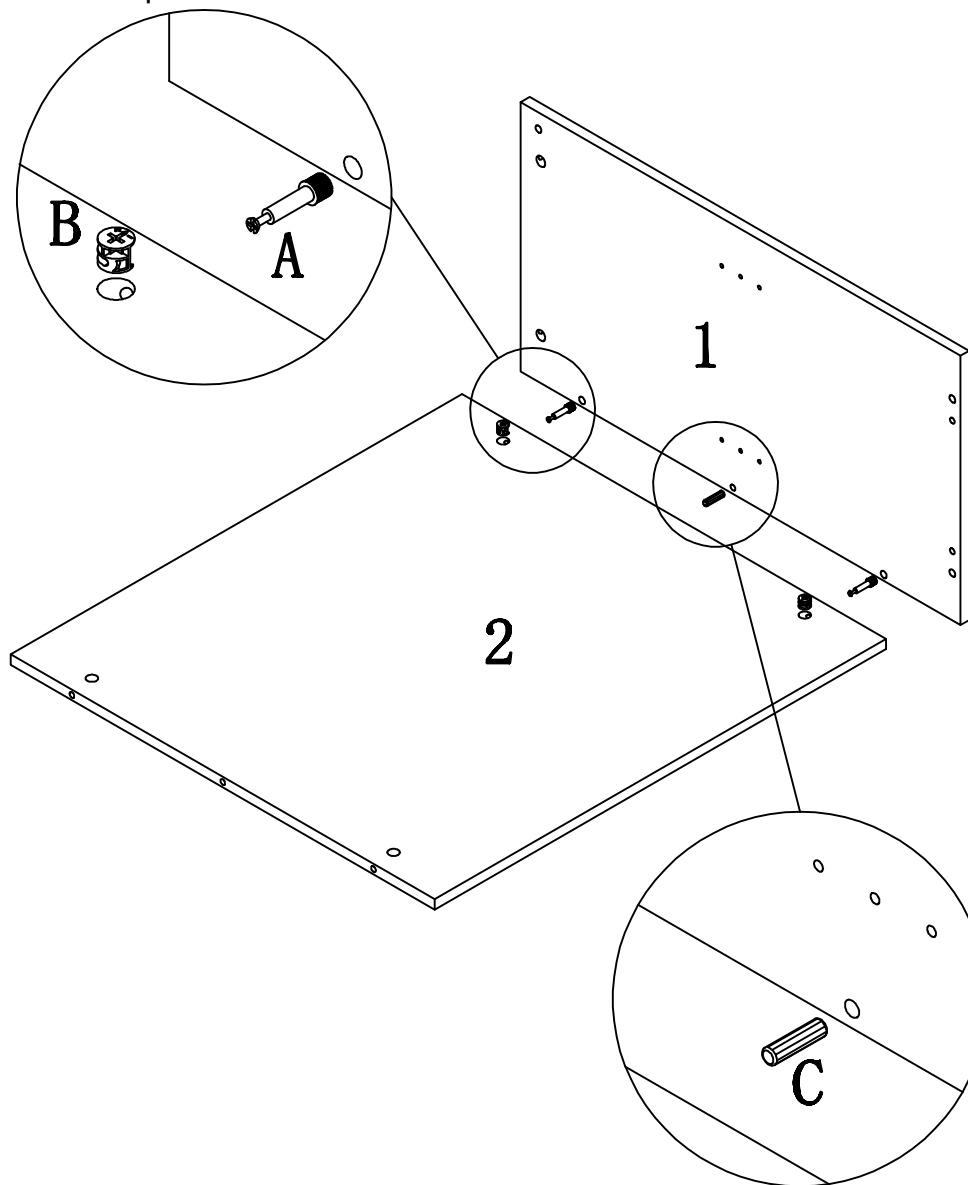


X1

C

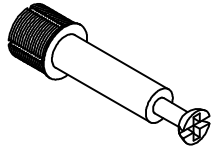
STEP:1

To fix the panel 1 and panel 2



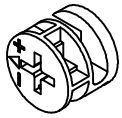
STEP:2

To fix the panel 3 and panel 4



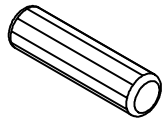
X3

A



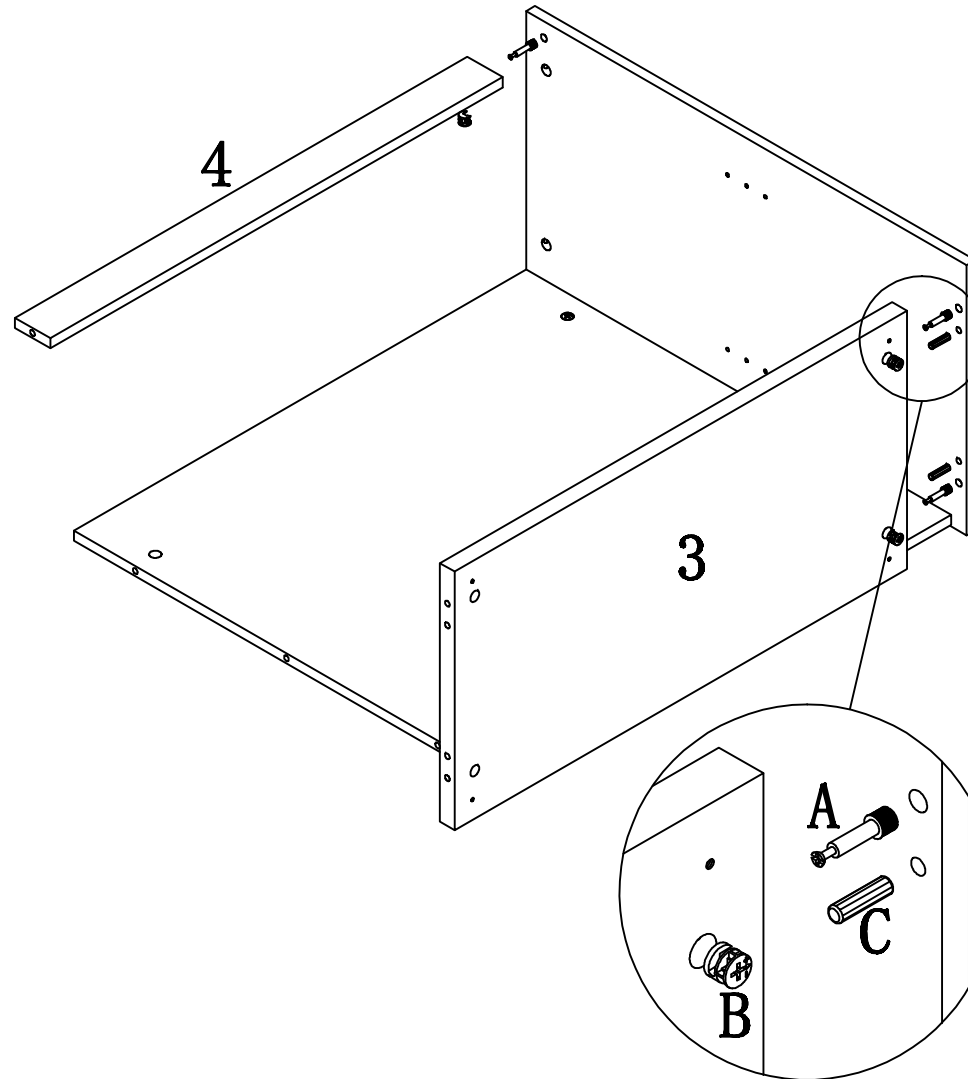
X3

B



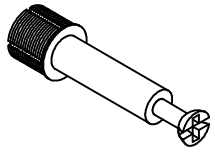
X2

C



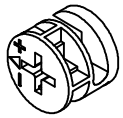
STEP:3

To fix the panel 5



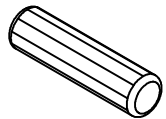
X3

A



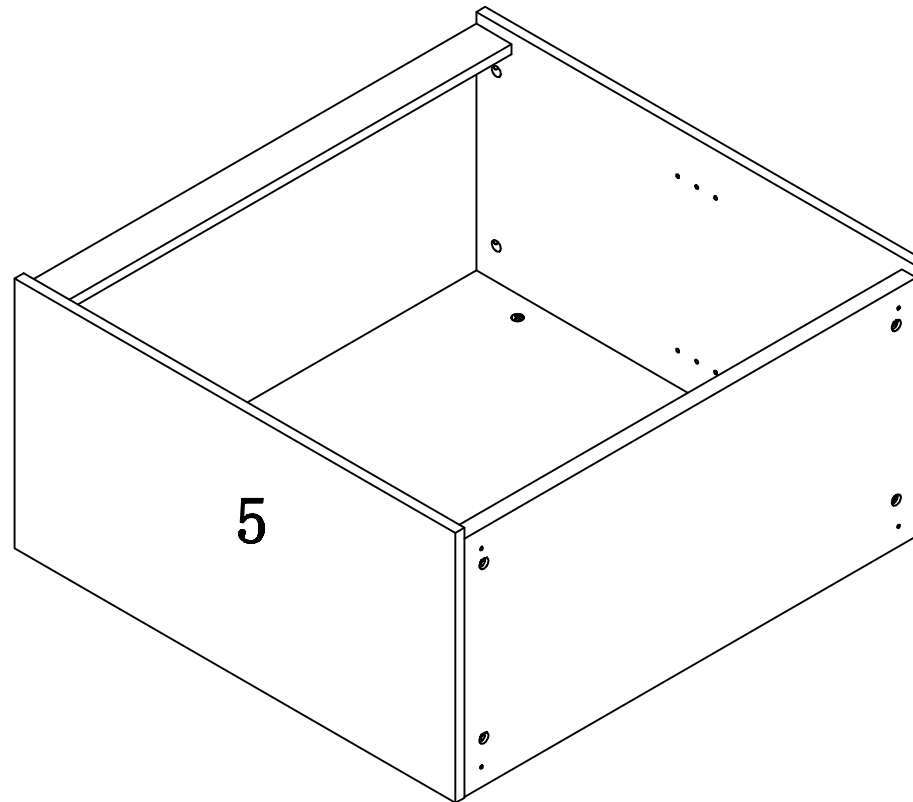
X3

B

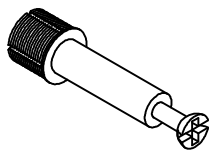


X2

C

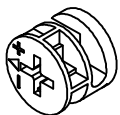


STEP:4 To fix top panel 6



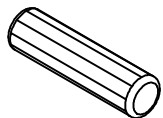
X6

A



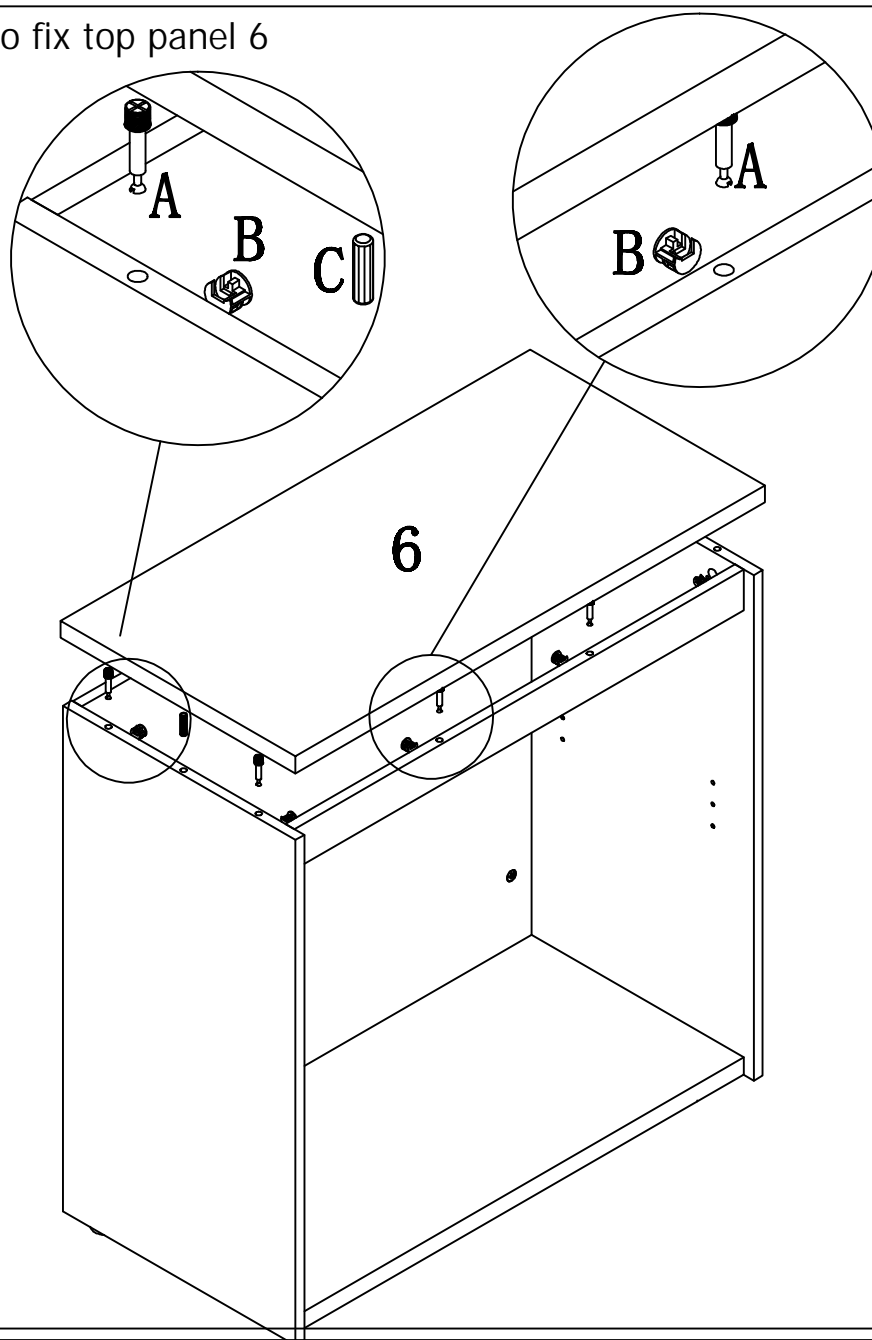
X6

B



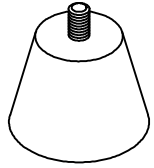
X2

C



STEP:5

To fix the base D and shelves fix screw E



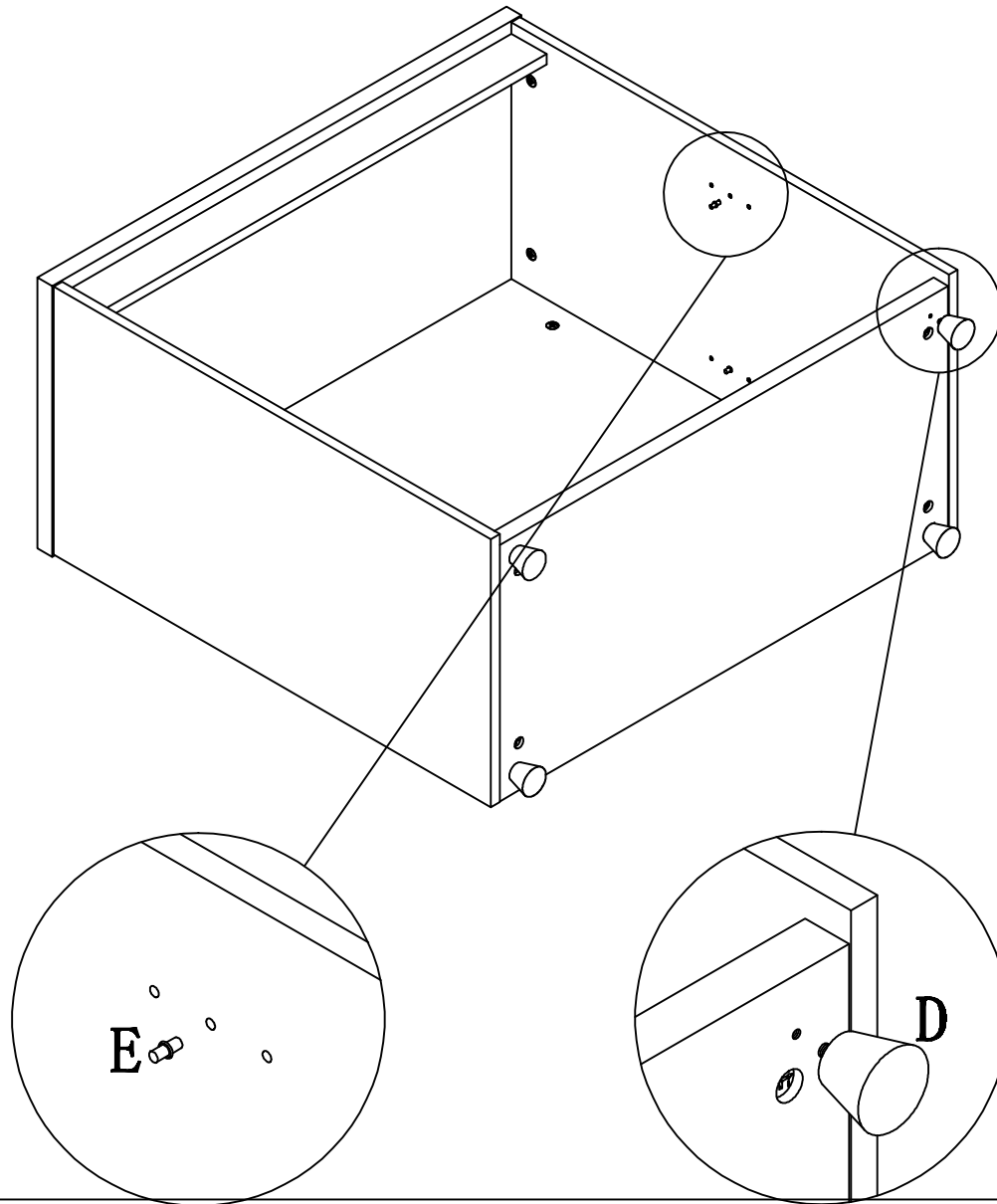
X4

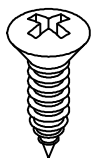
D



X4

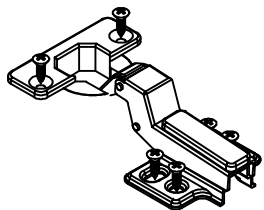
E





X24

F

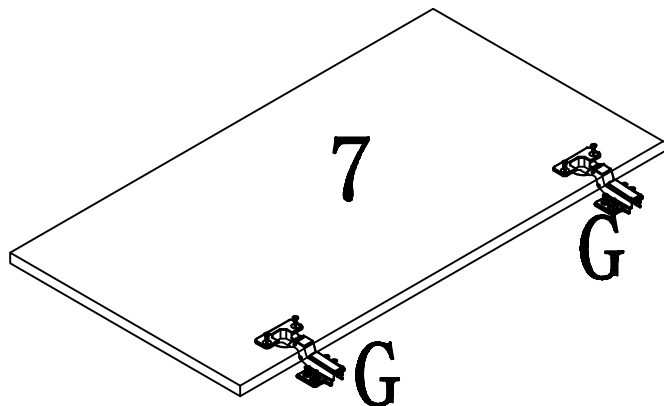


X4

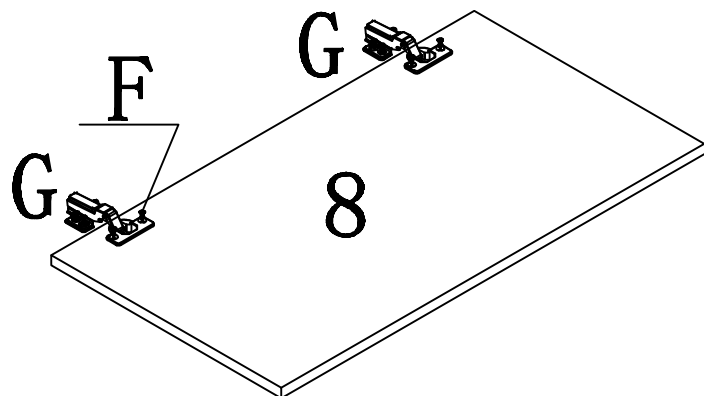
G

STEP:6

To put the shelf panel 9 inside



To fix the door hinge G on panel 7 and 8 ,then fix the door in cabinet



FINISH

